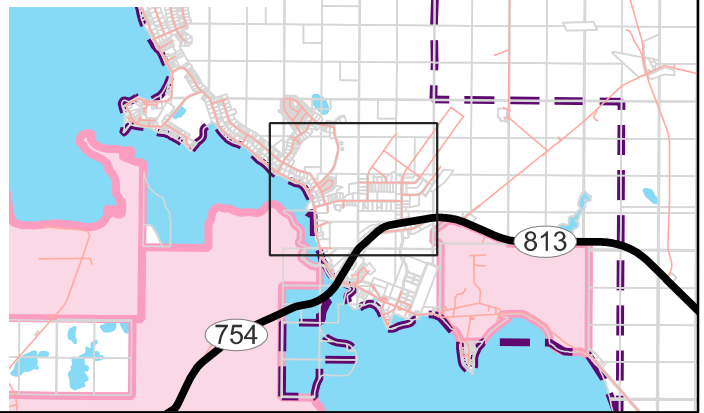


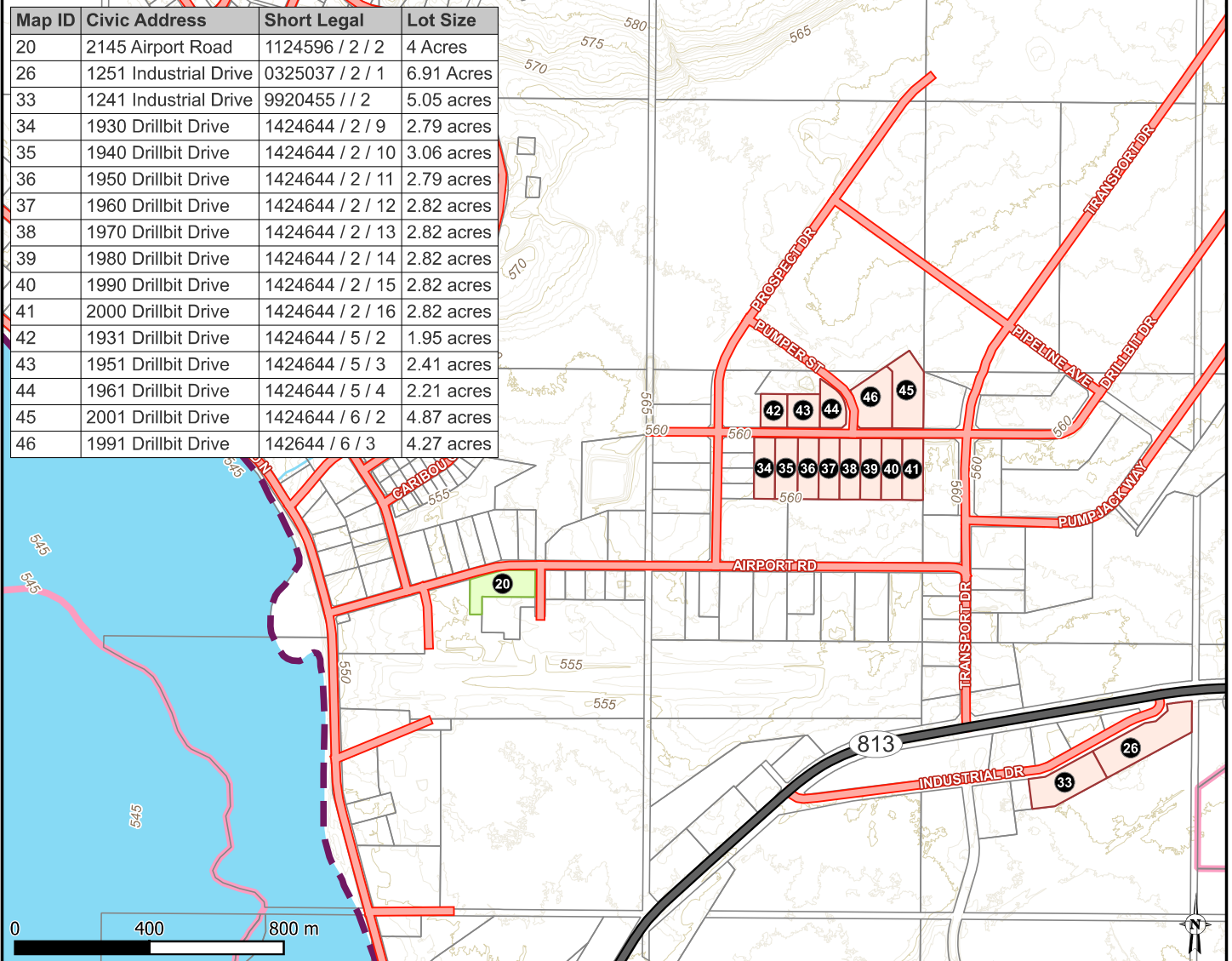


MD OF
OPPORTUNITY
ᑲᓐ"Δ<ᑦ\

Wabasca-Desmarais



Map ID	Civic Address	Short Legal	Lot Size
20	2145 Airport Road	1124596 / 2 / 2	4 Acres
26	1251 Industrial Drive	0325037 / 2 / 1	6.91 Acres
33	1241 Industrial Drive	9920455 / / 2	5.05 acres
34	1930 Drillbit Drive	1424644 / 2 / 9	2.79 acres
35	1940 Drillbit Drive	1424644 / 2 / 10	3.06 acres
36	1950 Drillbit Drive	1424644 / 2 / 11	2.79 acres
37	1960 Drillbit Drive	1424644 / 2 / 12	2.82 acres
38	1970 Drillbit Drive	1424644 / 2 / 13	2.82 acres
39	1980 Drillbit Drive	1424644 / 2 / 14	2.82 acres
40	1990 Drillbit Drive	1424644 / 2 / 15	2.82 acres
41	2000 Drillbit Drive	1424644 / 2 / 16	2.82 acres
42	1931 Drillbit Drive	1424644 / 5 / 2	1.95 acres
43	1951 Drillbit Drive	1424644 / 5 / 3	2.41 acres
44	1961 Drillbit Drive	1424644 / 5 / 4	2.21 acres
45	2001 Drillbit Drive	1424644 / 6 / 2	4.87 acres
46	1991 Drillbit Drive	142644 / 6 / 3	4.27 acres



Land Parcels

- Contact Taxation Dept
- Lot Available
- Other Parcels
- Contours (1m elevation)
- Hamlet Boundary

The MD of Opportunity makes no representation or warranties regarding the information contained in this document, including, without limitation, whether said information is accurate or complete. Persons using this document do so solely at their own risk, and the MD of Opportunity shall have no liability to such persons for any loss or damage whatsoever.

This document shall not be copied or distributed to any person without the express written consent of the MD of Opportunity