

CHIPEWYAN LAKE SETTLEMENT WILDFIRE PREPAREDNESS GUIDE

Prepared for:



Alberta Environment and Sustainable
Resource Development



Prepared by:
Stew Walkinshaw, R.P.F.

MONTANE
Forest Management Ltd.

June 2012

The intent of this document is to provide an Incident Management Team with an overview of the planning area, fire behaviour potential, values-at-risk, and fire operations that can be utilized in the event that a wildfire threatens wildland/urban interface values-at-risk.

SECTION A: LOCAL AREA DESCRIPTION

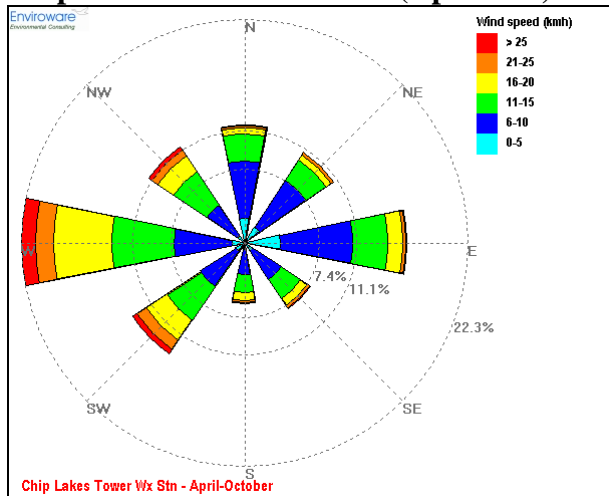
A2 - PLANNING AREA

FEATURE	JURISDICTIONAL AUTHORITY
ESRD Forest Area	Lesser Slave
Municipality(s)	Municipal District of Opportunity No. 17
Forest Management Area(s)	AIPac Forest Industries Ltd.

A2 - FIRE BEHAVIOUR POTENTIAL DESCRIPTION

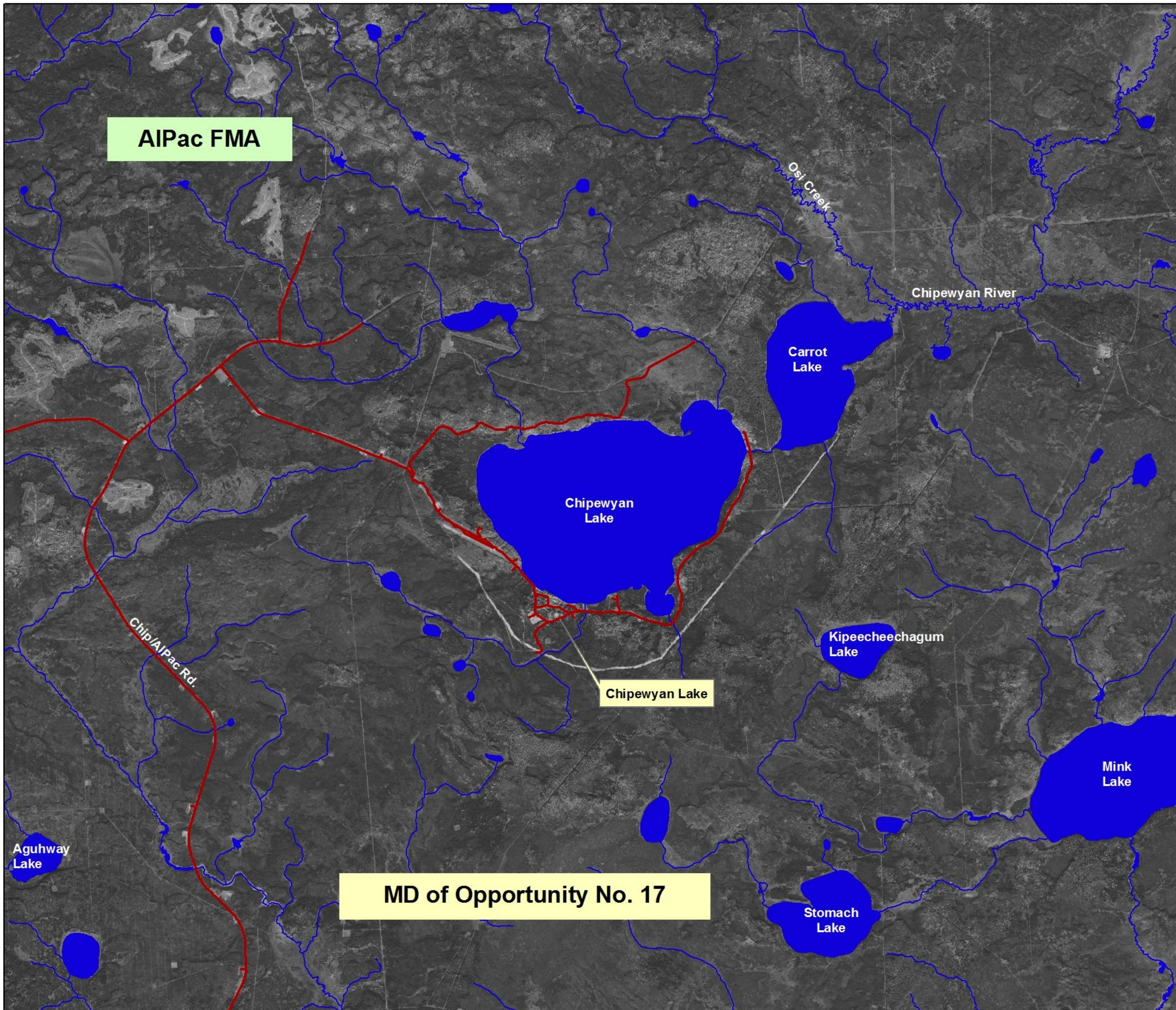
FACTOR	DESCRIPTION
Fuels Influence	<ul style="list-style-type: none"> Significant C-1, C-2 & M-1 fuel types South and East of Chipewyan Lake with scattered D-1 fuel types. Predominantly D-1, C-1, and M-1 fuel types to North and West with scattered C-2 and O1 patches (Map 2).
Weather Influence	<ul style="list-style-type: none"> Predominant and strongest wind directions are from the W and SW quadrants (Map 2). E and SE winds occur in spring season.
Topographic Influence	<ul style="list-style-type: none"> No topographical features that would influence wildfire threat to community.
Anticipated Fire Spread	<ul style="list-style-type: none"> Predominant landscape-level wildfire threat is from the south. Localized wildfire threat exists from C-2 & M-1 fuels within the community area.

Chip Lake Tower Windrose (April-Oct)



Map 1 Planning Area Chipewyan Lake

-  Waterbody
-  Access Road



Prepared by:
MONTANE
Forest Management Ltd.
June 2012




1:65,000

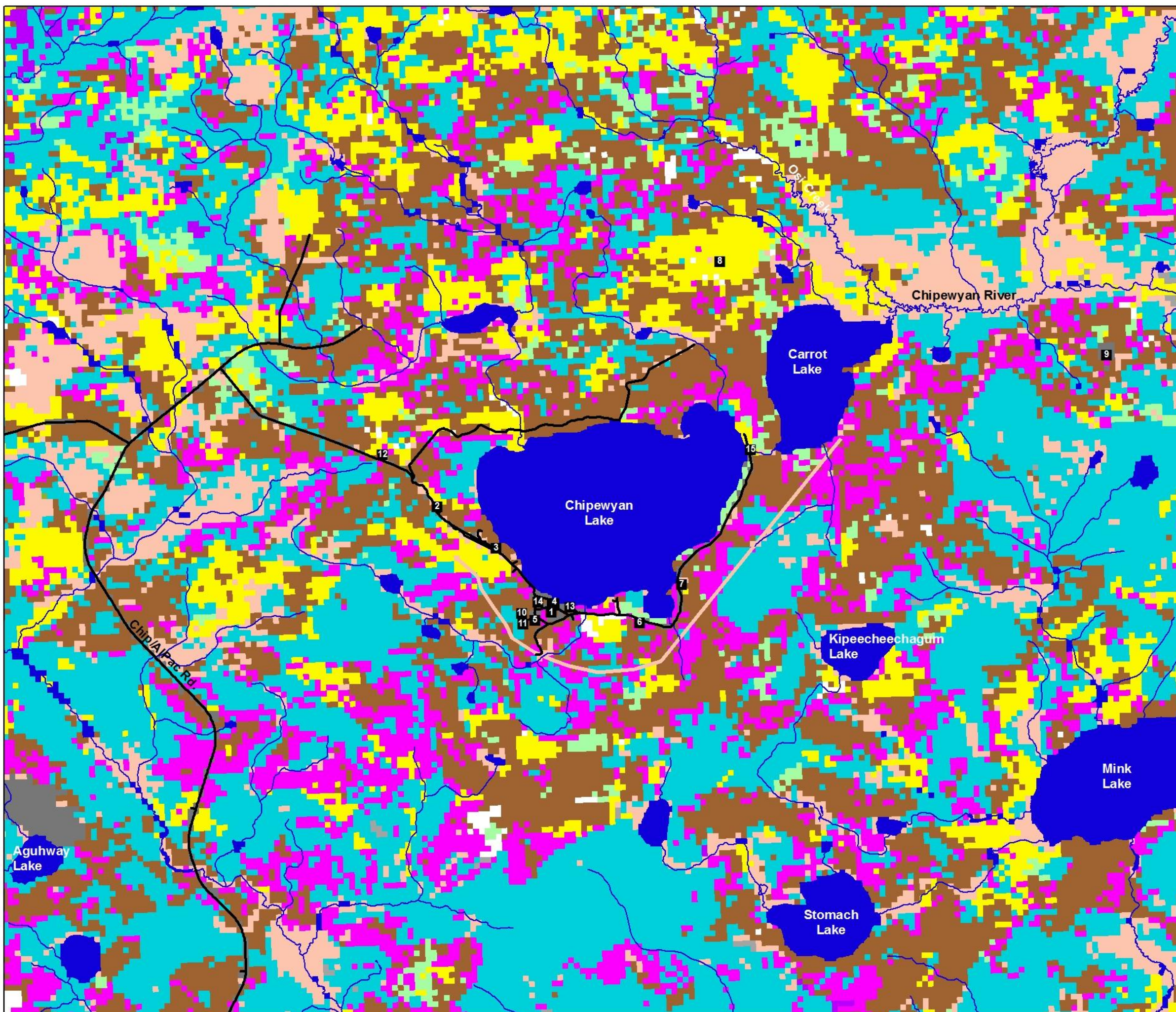
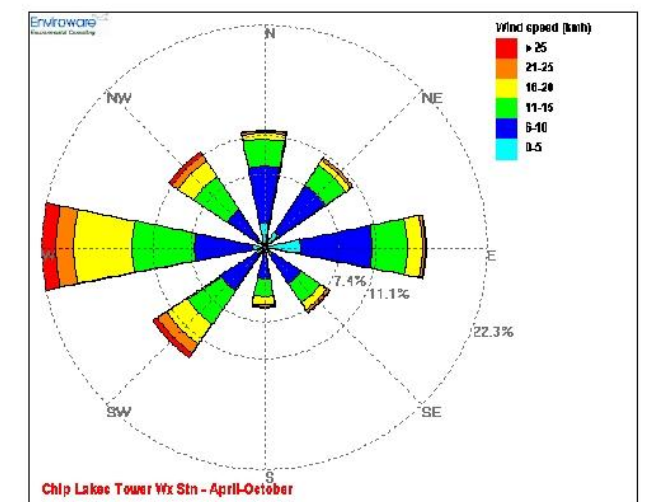
Map 2 Fire Behavior Potential Chipewyan Lake

FBP Fuel Types

-  Spruce-Lichen Woodland (C-1)
-  Boreal Spruce (C-2)
-  Mature Pine (C-3)
-  Immature Pine (C-4)
-  Open Pine/Fir (C-7)
-  Deciduous (D-1)
-  Mixedwood (M-1/M-2)
-  Slash (S-1/S-2)
-  Cured Grass (O1)
-  Non-Fuel (NF)
-  Water (WA)

 Access Road

 Value at Risk



Prepared by:
MONTANE
Forest Management Ltd.
June 2012



SECTION B: VALUES-AT-RISK

B1 – STANDARD VALUES-AT-RISK

ID#	Value Name	Value Type	Lat/Long	No. of Structures – Roof Material	
1	Chipewyan Lake Settlement Sec 33&34-91-22-W4M	Dwellings - 21 Cabins - 11	56° 56.374' 113° 28.570'	30 2	Non-Combustible Combustible
2	MD Opportunity Waste Transfer Stn NW5-92-22-W4M	Other	56° 57.423' 113° 30.446'	1	Non-Combustible
3	Chipewyan Lake Fire Base SW4-92-22-W4M	Fire Base	56° 57.011' 113° 29.482'	1	Non-Combustible
4	Chipewyan Lake School NE33-91-22-W4M	Other	56° 56.458' 113° 28.505'	1	Non-Combustible
5	MD Opportunity Maintenance Yard NW33-91-22-W4M	Other	56° 56.310' 113° 28.861'	1	Non-Combustible
6	Chipewyan Lake Community Hall NE34-91-22-W4M	Other	56° 56.230' 113° 27.044'	2	Non-Combustible
7	Multi-Cabin Site NW35-91-22-W4M	CR Subdivision	56° 56.571' 113° 26.283'	8	Non-Combustible
8	Chipewyan Lake Fire Tower SE23-92-22-W4M	Fire Tower	56° 59.600' 113° 25.345'	1	Non-Combustible
9	CNRL Compressor Stn & Camp SE16-92-21-W4M	Oil & Gas Facility	56° 58.524' 113° 18.731'	5	Non-Combustible

B2 – CRITICAL VALUES-AT-RISK

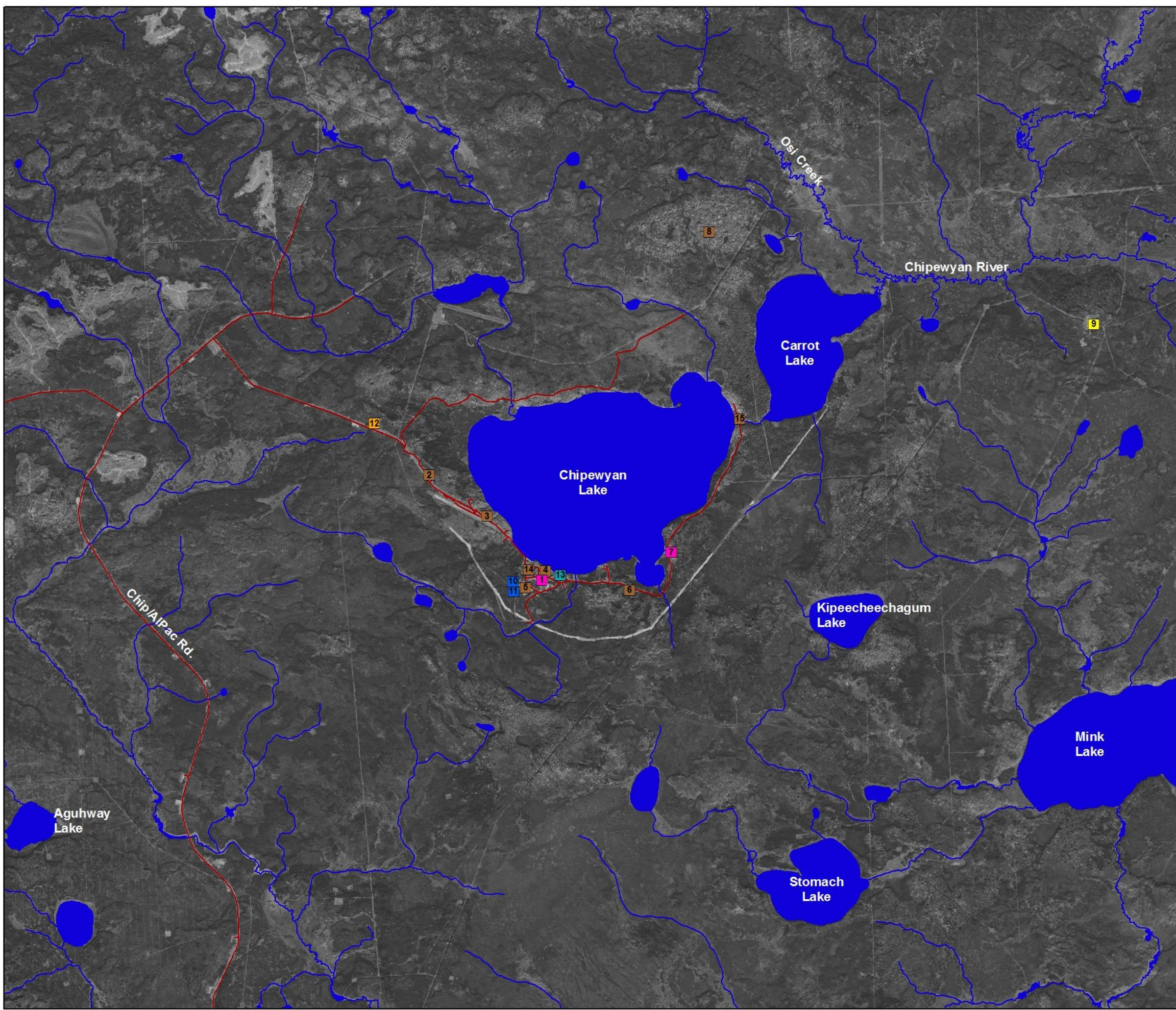
ID#	Value Name	Value Type	Lat/Long	No. of Structures – Roof Material	
10	Unknown Owner NW33-91-22-W4M	Communication Tower	56° 56.373' 113° 29.075'	2	Non-Combustible
11	AB. SuperNet Tower NW33-91-22-W4M	Communication Tower	56° 56.279' 113° 29.067'	1	Non-Combustible
12	Atco Power Generation Station SE7-92-22-W4M	Power Generation Facility	56° 57.942' 113° 31.339'	5	Non-Combustible
13	MD 17 Water Treatment Plant NE33-91-22-W4M	Water Treatment Facility	56° 56.411' 113° 28.244'	1	Non-Combustible

B3 – SPECIAL VALUES-AT-RISK

ID#	Value Name	Value Type	Lat/Long	No. of Structures – Roof Material	
14	Chipewyan Lake Cemetery NE33-91-22-W4M	Cultural	56° 56.479' 113° 28.788'	Gravesites	
15	Carrot Lake Cemetery SE11-92-22-W4M	Cultural	56° 57.809' 113° 24.978'	Gravesites	

Map 3 Values at Risk Chipewyan Lake

- Hamlet/CR Subdivision
 - Commercial Facility
 - Communication Tower
 - Dwelling/Cabin
 - Millsite
 - Oil & Gas Facility
 - Power Generation Facility
 - Recreational Facility
 - Water Treatment Facility
 - Other
-
- Waterbody
 - Access Road



Prepared by:
MONTANE
Forest Management Ltd.
June 2012



**Map 3a
Values at Risk
Chipewyan Lake**



-  Hamlet/CR Subdivision
 -  Commercial Facility
 -  Communication Tower
 -  Dwelling/Cabin
 -  Millsite
 -  Oil & Gas Facility
 -  Power Generation Facility
 -  Recreational Facility
 -  Water Treatment Facility
 -  Other
-
-  Waterbody
 -  Access Road

Prepared by:
MONTANE
Forest Management Ltd.
June 2012



1:20,000

SECTION C: FIRE OPERATIONS

C1 – FUNCTIONAL ROLES

JURISDICTION	AGENCY RESPONSIBLE
Wildfire	Environment & Sustainable Resource Development – Forestry Division
Evacuation	MD of Opportunity No. 17
Values Protection	MD of Opportunity No. 17

C2 – MUTUAL-AID COMMUNICATIONS

TYPE	FREQUENCY(s)
Command Provincial Mutual-Aid	RX/TX - 156.855 MHz
Tactical	To be assigned at time of incident

C3 – MINIMUM AUTO-ORDER LIST

AREA	APPARATUS	HEAVY EQUIPMENT	OTHER EQUIPMENT / MANPOWER
Chip Lake Settlement	2 – Type V Wildland Engines 2 – Type II Support Water Tenders	2 – Dozer Grps	2 – HiVol Pump/Sprinkler Units c/w crews 2 – BB4 pumps 10 – MK3 pumps 6000' – 2.5" – 4" hose 15,000' – 1.5" hose 4 – Pumpkins (2500 gal.) 1 – Sprinkler trailer 12 – Sprinkler kits, Large 10 – Sprinkler kits, Small

C4 – STRUCTURE PROTECTION STRATEGIES AND TACTICS

AREA	STRATEGIES	TACTICS	COMMENTS
Chip Lake Settlement	Protect Onsite	<ul style="list-style-type: none"> Reinforce containment line with dozer groups Conduct burnout/backfire from containment line Zone 1-2 sprinkler structures as required Bump & Run with Wildland Engines for firebrand ignitions inside the containment line 	

C5 – FIRE SUPPRESSION WATER SUPPLY

MAP#	NAME	TYPE	LOCATION	CAPACITY/PRESSURE/FLOW
T1	Chip Lake West	Water Tender	56° 56.617' 113° 28.840'	Unlimited
T2	Chip Lake Water Plant	Water Tender	56° 56.411' 113° 28.244'	Overhead fill point 300m ³ , 30 lpm @ 60psi
T3	Chip Lake Central	Water Tender	56° 56.519' 113° 27.425'	Unlimited
T4	Chip Lake East	Water Tender	56° 56.786' 113° 26.435'	Unlimited
T5	Chipewyan River	Water Tender	56° 57.773' 113° 24.984'	Unlimited

C6 – STAGING AREAS

MAP#	NAME	LOCATION	DESCRIPTION
S1	Chip Lake Staging	56° 56.310' 113° 28.861'	MD Maintenance Yard

C7 - EVACUATION

MAP#	VALUE NAME	NO. PEOPLE	EVAC TIME (MINS)	SAFE REFUGE AREA	SPECIAL EVAC CONCERNS
1	Chipewyan Lake Settlement	75 - 100	180	N/A	Lack of personal vehicles - public transportation may be needed
8	Chip Lake Fire Tower	1	30	N/A	
9	CNRL Compressor Strn.	4-6	60	N/A	

C8 – SAFE REFUGE AREAS

MAP#	NAME	LOCATION	DESCRIPTION
SR1	Chip Lake School	56° 56.458' 113° 28.505'	School parking area and Chip Lake shoreline

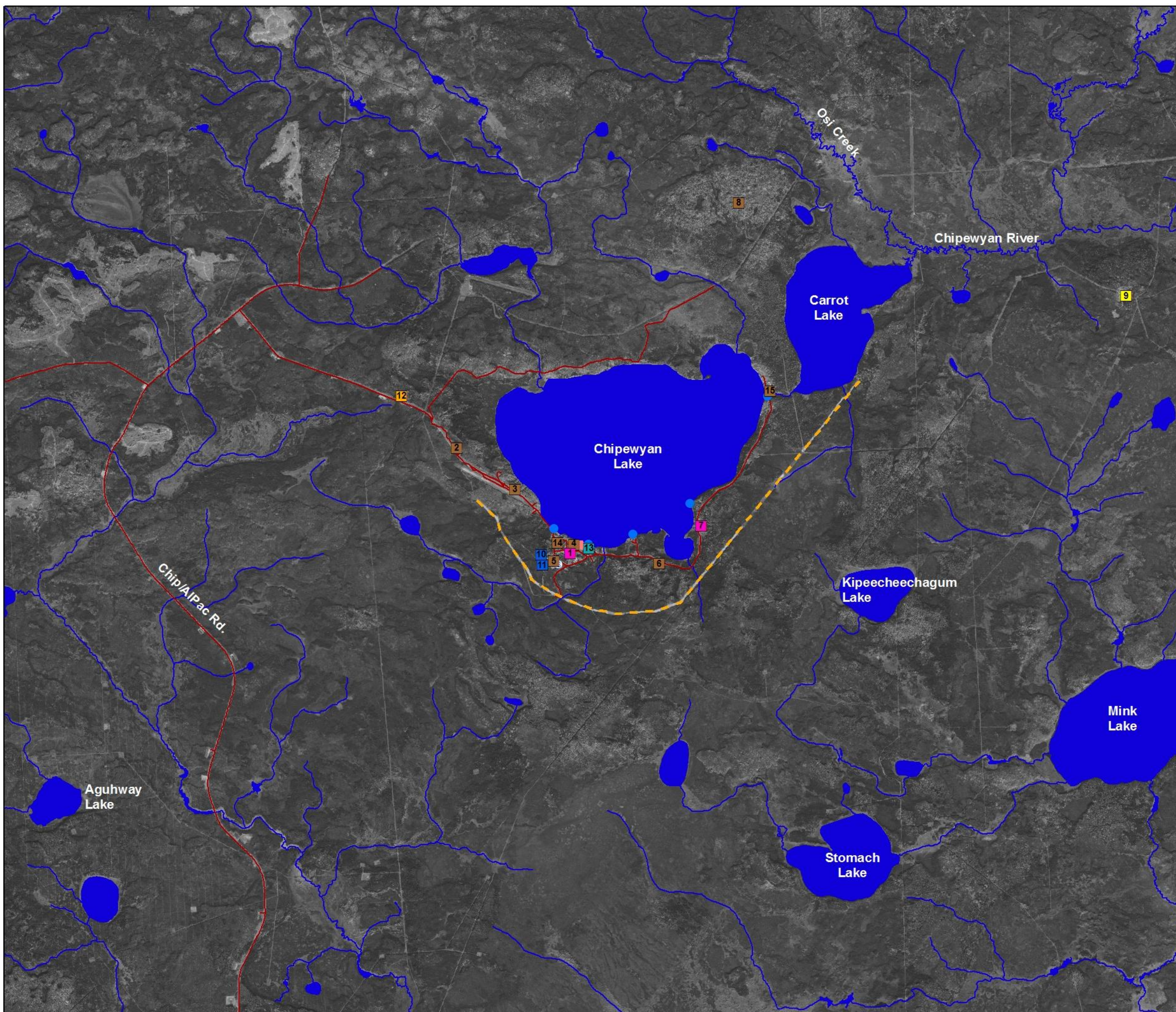
Map 4 Fire Operations Chipewyan Lake

Values at Risk

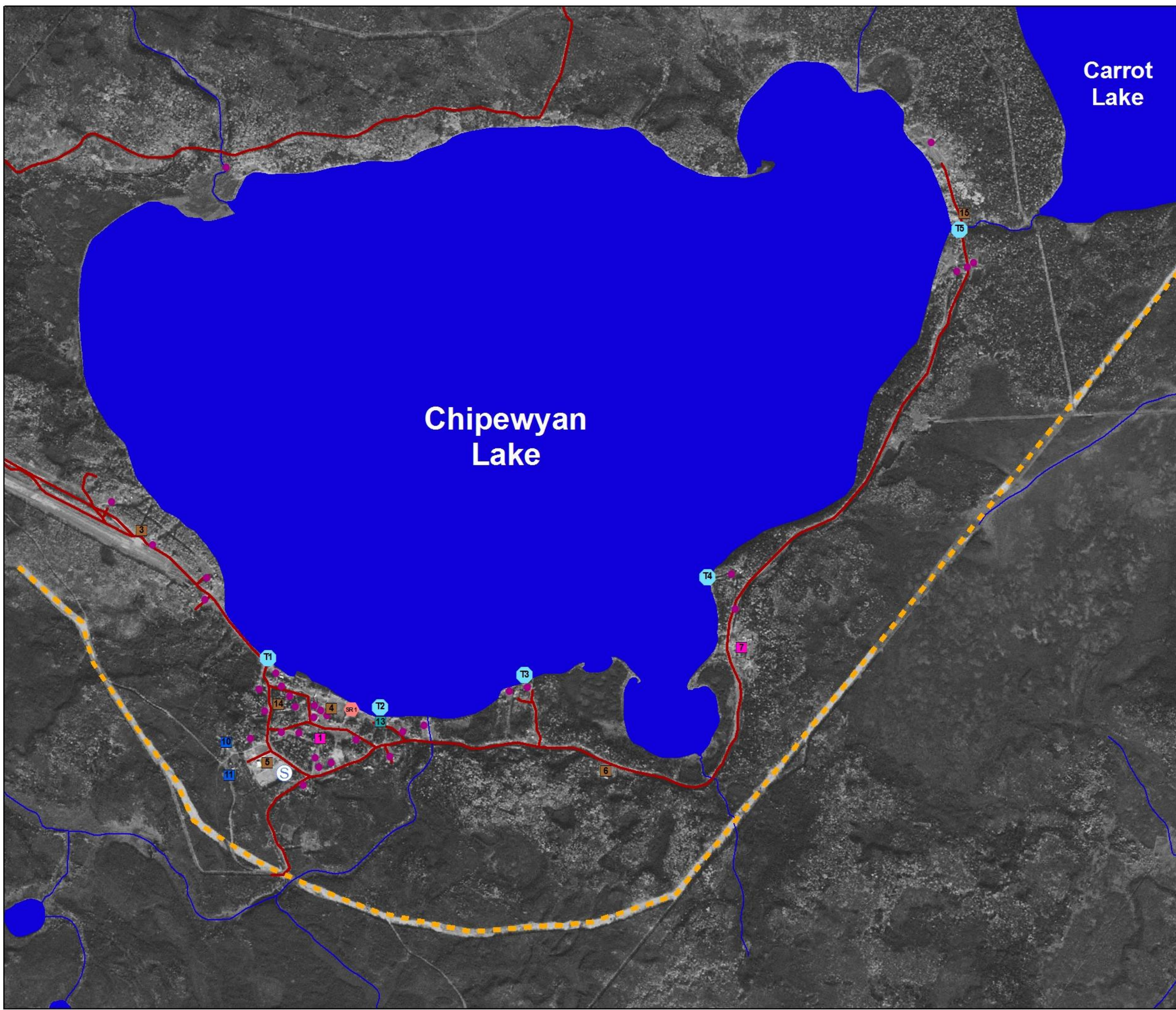
- Hamlet/CR Subdivision
- Commercial Facility
- Communication Tower
- Dwelling/Cabin
- Millsite
- Oil & Gas Facility
- Power Generation Facility
- Recreational Facility
- Water Treatment Facility
- Other

Fire Operations

- ⊙ T1 Water Source
- ⊙ SR1 Safe Refuge Area
- ⊙ S Staging Area
- - - Containment Line
- Waterbody
- Access Road



Map 4a Fire Operations Chipewyan Lake



Values at Risk

- Hamlet/CR Subdivision
- Commercial Facility
- Communication Tower
- Dwelling/Cabin
- Millsite
- Oil & Gas Facility
- Power Generation Facility
- Recreational Facility
- Water Treatment Facility
- Other

Fire Operations

- T1 Water Source
- SR1 Safe Refuge Area
- S Staging Area
- Containment Line
- Waterbody
- Access Road

Prepared by:
MONTANE
Forest Management Ltd.
June 2012



C9 – EMERGENCY CONTACT LIST

Emergency Management – Municipal District of Opportunity

Position	Name	Work	Cell	Home
CAO/DEM	Dennis Egyedy	780-891-3778	780-891-8482	780-891-0356
Deputy DEM	Martin Holst	780-891-3778	780-891-8157	780-891-2335
Municipal EOC	MD Office - Wabasca	780-891-3778		

Fire/Rescue – Municipal District of Opportunity-Wabasca - 911

Position	Name	Work	Cell	Home
Fire Chief	Terry Taron	780-891-3778	780-891-8007	780-891-2152
Deputy Fire Chief	Khristof Ruger	780-891-3949	780-891-1111	
Wabasca Fire Station		780-891-2205		
Dispatch Centre	Keytech	780-349-3933		

RCMP Wabasca - 911

Position	Administration	Complaint		
Wabasca Detachment	780-891-3768	780-891-3765		

Environment & Sustainable Resource Development (ESRD) – Wildfire Operations

Position	Name	Work	Cell	Fax
Forestry Manager	Iain Johnston	780-849-7058	780-805-0390	780-849-6826
Wildfire Operations Officer	Kevin Parkinson	780-849-7426	780-805-0312	780-849-6826
Wildfire Prevention Officer	Terry Jessiman	780-849-7412	780-849-1584	780-849-6826
PFFC Duty Officer		780-415-6460	780-913-2344	780-422-7230
Area Duty Officer		780-849-7429	780-849-1247	780-849-6826
Area Dispatch Centre		780-849-7428		

Others

Organization	24-Hour Contact Number	Local Contact Number
AlPac Forest Industries	780-525-8200	
Atco Electric Control Centre	780-623-1251	
Canadian Natural Resources (CNRL)	1-888-878-3700	
MD Opportunity Landfill – Chip Lk.		780-891-8178