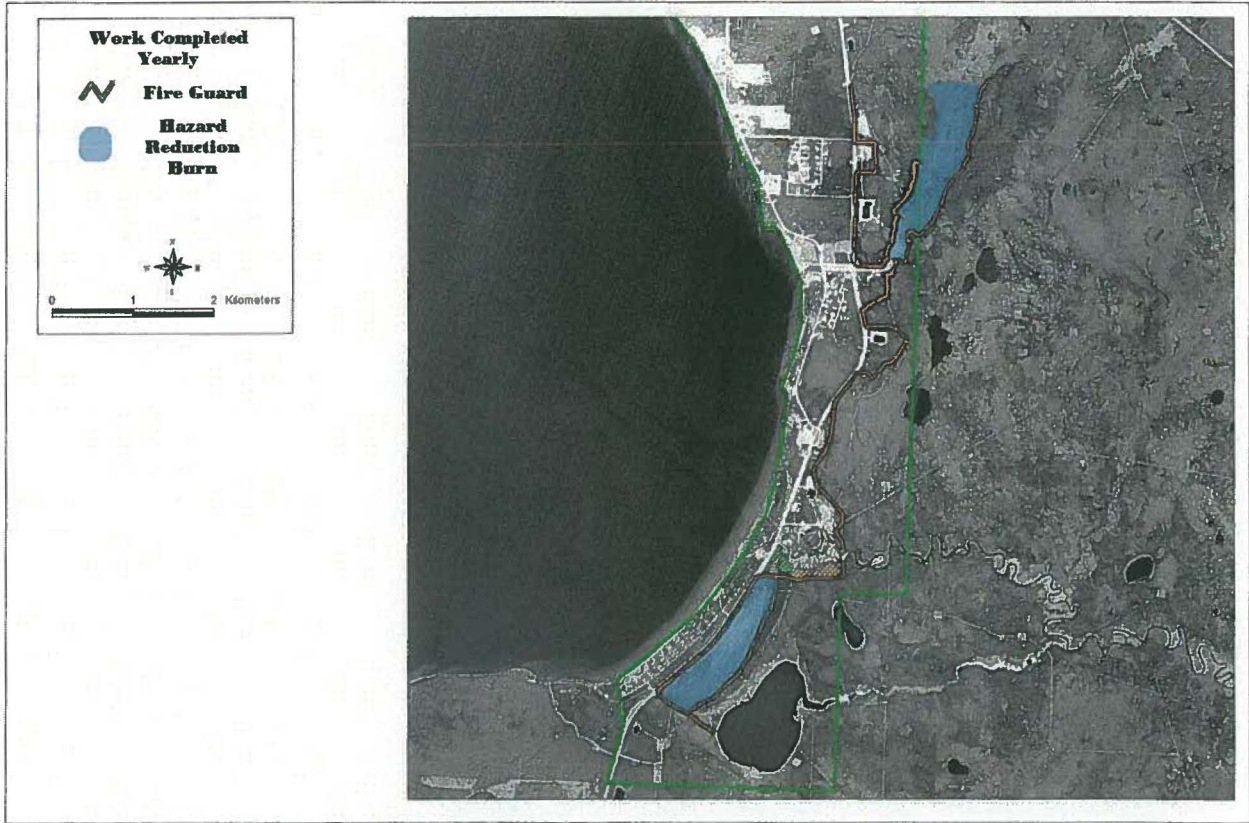


# Calling Lake FireSmart 2013 Priorities

Work to be completed displayed in order of priority

## FALL/WINTER



Work to be completed

- Thinning
- Maintenance



0 0.1 0.2 Kilometers



Prepared By: W. Bereska 09/2008  
Wildlife Consulting

Work to be completed

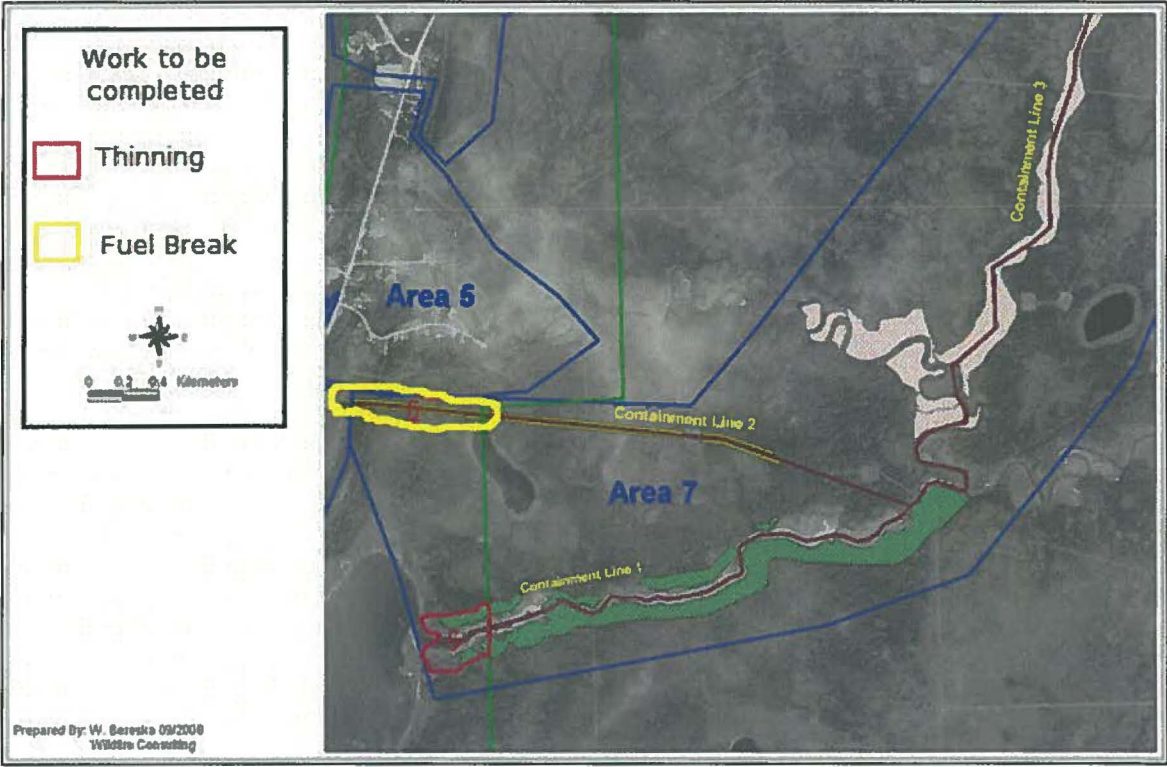
- Thinning



0 0.1 0.2 Kilometers

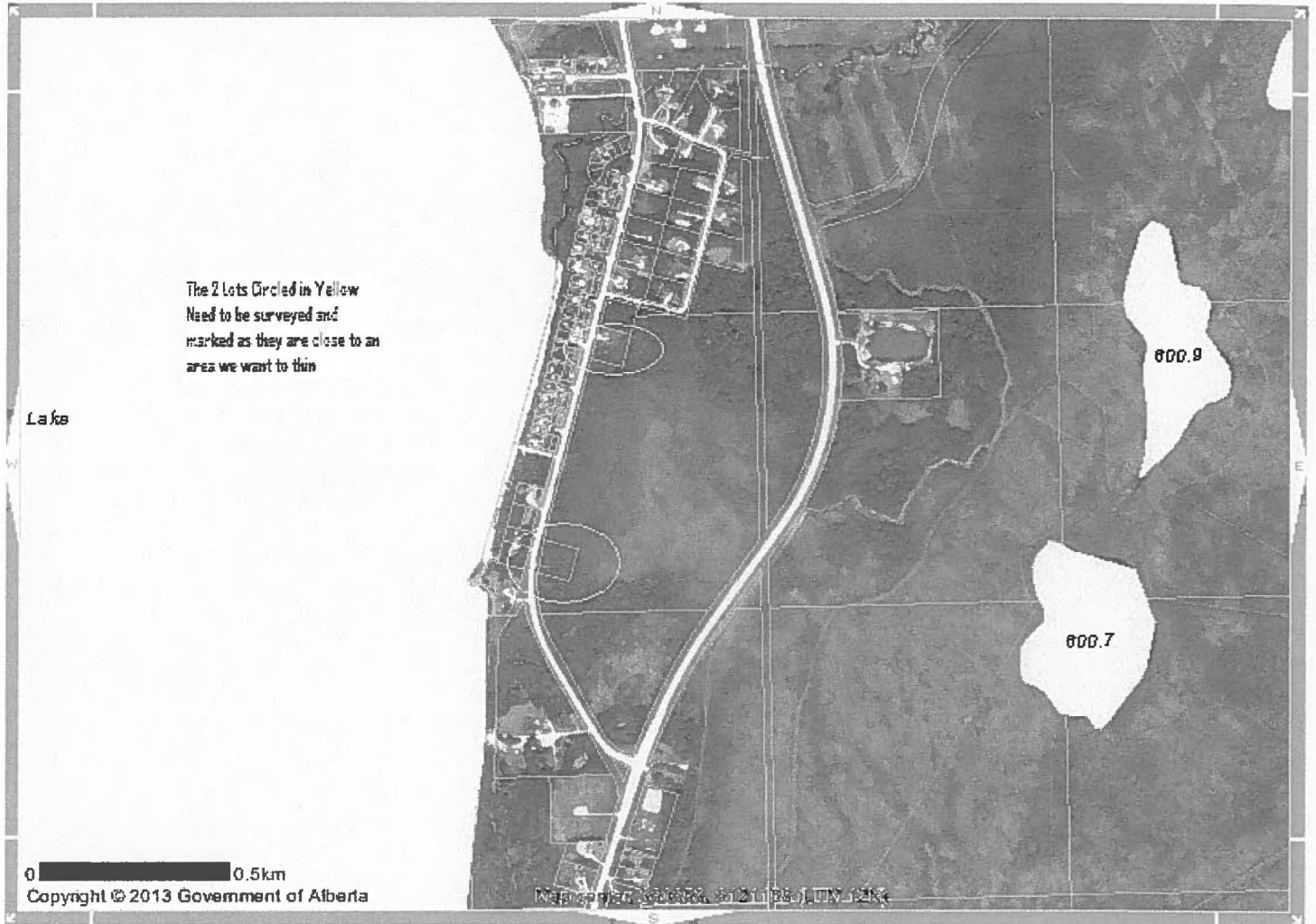


Prepared By: W. Bereska 09/2008  
Wildlife Consulting



Prepared By: W. Bereska 09/2008  
Wildfire Consulting

Here is a map with 2 lots that we will need Surveyed eventually. If you don't want to do it this year we can plan to avoid the area for now.



This email and any files transmitted with it are confidential and intended solely for the use of the individual or entity to whom they are addressed. If you have received this email in error please notify the system manager. This message contains confidential information and is intended only for the individual named. If you are not the named addressee you should not disseminate, distribute or copy this e-mail.